

# Xtra-curricular

NEWSLETTER OF THE **SOUTH COUNTRY EDUCATION FOUNDATION**



## From the Helm



Joining the board of South Country Education Foundation seven years ago I had a good sense of the mission of the Foundation and how the group set about accomplishing its goals. As I look to the future, I see limitless opportunities for our organization to reach the lives of thousands of students who live and learn in the South Country School District.

This year, for our annual fundraiser, we ran an impish photograph of a high school student looking through a camera lens. The theme of the invitation and our fundraiser is "Focus on the Future". And I believe that is what SCEF does—not only this year but *every* year.

The photograph was taken as part of a SCEF funded grant titled "Belle Lumiere". High School photography students traveled to a New York City gallery to study the lighting techniques of the masters. Once back in the classroom they recreated what they had learned.

Belle Lumiere is just one example of how a relatively small amount of grant money—we usually give no more than \$2000 for a project—can transform and excite students in a classroom. Once a student is intellectually charged, the future holds no bounds. So, with each and every grant, we focus on the future.

The board of directors of SCEF is continually finding ways to realize its mission and this year we were able to award our first round of grants for professional development to staff members in the district. Of course the students will benefit directly from the teachers' new knowledge and skills, but other staff members will benefit once the teachers come back in the fall and share what they have learned with their colleagues. Now that's how you reach thousands of students.

The grants we recently awarded this past spring will also reach thousands of students. There is a strong focus on science, literacy, music, gardening and writing. We have also decided to continue our partial funding of the popular Dancing Classrooms program at Frank P. Long Intermediate School. I encourage you to take a few moments to look through our newsletter and keep up to date on the latest projects we have been funding.

Finally, I would like to invite you to celebrate and support our mission of enhancing education throughout the South Country School District and attend our Annual Cocktail Benefit and Auction at the beautiful waterfront home of Richard and

Chantal Berman on Saturday, July 14th from 5–7:30 PM. Your support allows you to be a part of our efforts to keep reaching as many students as possible.

—MARY MOJALLALI

## Professional Development Grant Debuts

Professional development is one way teachers stay current with education trends and learn about new initiatives for the classroom. This spring, SCEF offered its first round of professional development grants to teachers employed by our district.

We were pleased to fund the tuition and associated costs for three teachers in our district to attend this summer the week-long workshops at Columbia University Teachers College Summer Institutes for Reading. The Columbia University course work will not only help these teachers respond to the needs of their students but will also strengthen their skills which translates into stronger student achievement.

SCEF was assisted in the development of this grant by Bellport High School alumna Kelly Zanazzi (BHS '99). She is now a teacher in the Holliston, Massachusetts Public Schools where a similar program is in place.

Linda Rozzi, Assistant Superintendent for Curriculum, Instruction and Technology, supported this initiative and wrote: "The professional development grants from South Country Education Foundation help us to develop great teachers with the support and resources they need. Such awards confirm our teachers' work as innovators and leaders in education reform. We thank South Country Education Foundation for developing this pilot program, and look forward to celebrating the successes of our teachers with them in the near future."

Grant winners left to right: Jennifer Hayhurst, Literacy Coach, Grades K-3, Verne W. Critz Elementary School; Susan Gittler, Reading Specialist, 4th and 5th Grades and Josephine Messina, Reading Specialist, 4th and 5th Grades, both of Frank P. Long Intermediate School. PHOTO BY LARRY SRIBNICK





PHOTO BY DONNA ESP

## "Say Strawberries"

Members of the Frank P Long Intermediate School's ever popular Garden Club show off a bumper crop of strawberries in their atrium's garden. The club has planted fruit trees, vegetables plots, a berry garden and numerous perennials beds, some honoring loved ones and friends. The students are especially excited by the five box turtles who now call the garden home and who enjoy some of the fruits of their labors.

Woodworking Club members, surrounding teacher and mentor Pete Cisek, show off their latest creations: bird feeders, birdhouses, footstools, magazine racks and hot plates. Over 100 students each year have joined in the constructive fun and opportunity to use real carpentry tools to build their creations in this after school program.

PHOTO BY DONNA ESP



Pete Cisek is a perennial SCEF grant recipient, receiving many grants to support his two popular enrichment programs at Frank P Long Intermediate School. He and his students have donated many items for the SCEF auction through the years, including very special adult and child Adirondack chairs for this year's event. Cisek will retire this year after 38 years of teaching. The clubs will continue in part with the support of SCEF. We wish Pete all the best in his retirement

## Karl Rohrmeier Joins SCEF Board

Karl Rohrmeier is the newest member to join the board of directors of South Country Education Foundation. Mr. Rohrmeier brings a long-standing interest in public education to the board. A senior project management professional, with years of experience in the health care industry, he is employed as a project manager at the Staten Island University Hospital.

An informational technology specialist, Mr. Rohrmeier served several terms on the South Country Library Board. There he used his natural curiosity and professional background to help lead the library into a new era of information distribution.

"Libraries have become community centers where information is delivered and shared through a myriad of technologies. I see similarities in the school environment and hope my professional expertise will make me a valuable member of the board," said Mr. Rohrmeier.

He and his wife, Annie, have lived in Bellport Village for more than 35 years. They raised three children here, all of whom were educated in South Country schools.

"I've followed the activities of SCEF and have always been amazed to see how a small amount of money can make such a huge difference in a classroom, bringing excitement and innovation to the learning experience," Karl said.

Mr. Rohrmeier earned a Masters in Health Services Administration from the State University of New York at Stony Brook. His undergraduate degree is from Richmond College, City University of New York.

Karl's professional memberships include Project Management Institute and American College of Health Care Executives. In the past he was a vice president of the Long Island Chapter, Health Care Information and Management Systems Society.

OPPOSITE PAGE 

GRANT RECIPIENTS GATHERED at the Bellport home of Barbara and Edward Knowles in June to celebrate the dozens of grants given to deserving teachers, community members and students during the past year. Shown, from left to right, are: Susan Gittler, Maryanne Brandi, Josephine Messina, Angela Muller, Pete Cisek, Marilyn Anderson, Helen Geraghty, Sonia Orfin, Jennifer Hayhurst, Dorothy Durand, Katherine Frankie, Stephanie Pirozzi, (mystery grantee), Annmarie O'Sullivan, Dan Garisto, Dan Santana and Sam Hoff.



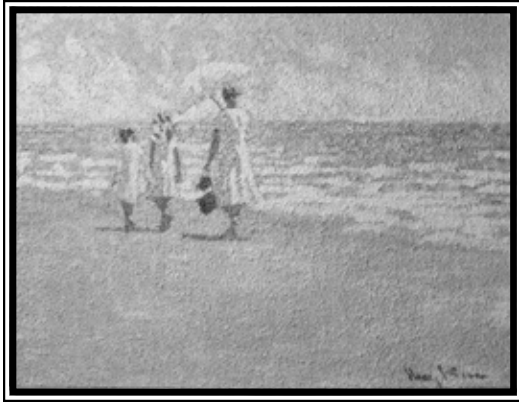
### **Everybody in the Pool!**

Dozens of students participated in swimming lessons at the Patchogue YMCA pool this spring funded in a cooperative effort between SCEF and the Knapp Swezey Foundation. The program was supervised by the Boys and Girls Club of the Greater Bellport

Area. Students enrolled for an eight-session program. The popular program will continue in the fall. Those interested in the fall program can sign up by calling the Boys and Girls Club at 631-286-9090

PHOTO BY LARRY SRIBNICK





30" x 40" original early 20th century oil painting.  
Donated by Richard Weissman.



Two Adirondack chairs. Made by the students in  
Charly Rogener's Bellport High School Technology class.

PHOTO BY MELANIE GUPTAR



# Focus on these Auction

Fine art print of a David Ebner  
drawing—signed, numbered, pro-  
duced by LuAnn Thompson and  
framed by the artist.



Kreb Cycle offers this Pinarello Lungavita Single Speed Messenger Bike  
Fixed or Free Wheel, 56cm high for a 5'8" to 6' tall person.





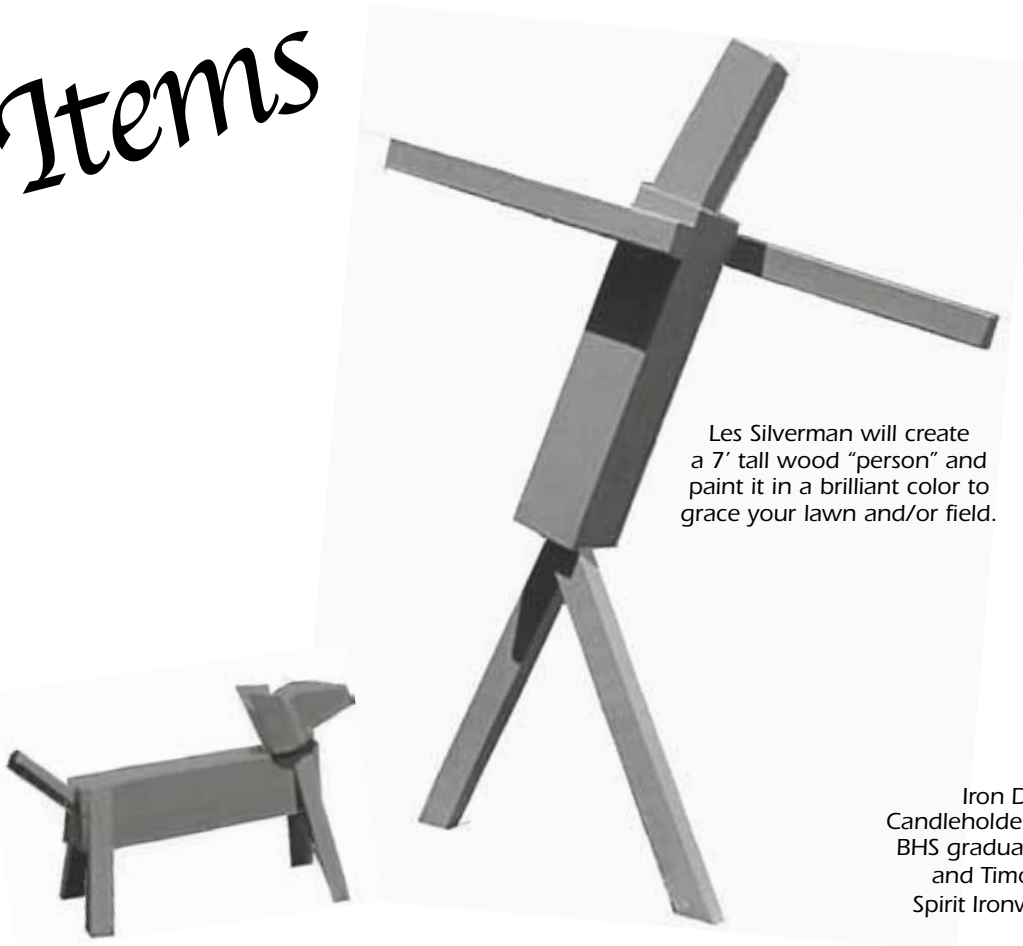
### Set Your Sights on an Extraordinary Get-Away...

FIVE BEDROOMS IN BELLPORT VILLAGE with a five-minute walk to the bay. Three-week rental (can be broken up) for some lucky people (maximum 9 including children). Propane grill, WiFi and cable TV. Utilities and In/Out cleaning included. Available September 8th to December 10th, 2012 or January 11th to June 23rd, 2013. Heated pool (climate permitting). Minimum bid \$6,500.

THREE BEDROOM FIRE ISLAND BEACH HOUSE. Sleeps eight. Has a large deck with outdoor kitchen and large outdoor shower. Only a few steps away from the ocean and bay. Available for one week in the fall, September 28th to November 16th, 2012 (excluding Columbus Day weekend) or one week in spring 2013, April 5th to June 7th (Memorial Day weekend not included).

BREATH-TAKING EAST RIVER VIEWS are the centerpiece of this luxury apartment available July 20th to December 31st, 2012 (except Sept. 14th-28th and Thanksgiving) for a perfect weekend (Fri. noon to Mon. noon) in Manhattan for one couple. Champagne and a refrigerator stocked with breakfast foods make the visit very special. Gym & pool guest passes included. One week's notice required.

## Items



Les Silverman will create a 7' tall wood "person" and paint it in a brilliant color to grace your lawn and/or field.

Iron Double Lily Candleholder made by BHS graduates Rachel and Timothy Miller Spirit Ironworks, Inc.



SCEF makes grants to not-for-profit institutions, students and professional staff in the South Country school district. The grants can be given for curriculum development, educational equipments, exchange program sponsorship, fellowships, special assemblies and for guest speakers, independent study, artists inresidence and creative teacher initiatives.

Want to apply? Visit our website at [www.scefonline.org](http://www.scefonline.org).

## \$17,000 FUNDS A BANNER SPRING GRANT CYCLE

A DNA Profiling class will stretch the scientific might of Bellport Middle School students, an exciting example of many science-related grants given this spring. Budding writers will be inspired by visits from three well-known authors. And, The Clipper, Bellport High School's award-winning newspaper, is now up and running on the web. All this made possible through SCEF and the donations of generous community members who support exciting, mind-expanding classroom experiences.

### **Bellport Youth Ensemble**

John Kocay  
Greater Bellport Area

**\$1,000.00**

The Bellport Youth Ensemble provides a summer music program with a string ensemble, chorus and wind symphony for school district students in grades K-8. The organization will use the funds to purchase instruments for needy children and scholarship money for tuition.

### **The Weather Show**

Kimberly Morris, Craig Surrusco, Liz Orsino,  
Tony Gresi  
Bellport Middle School

**\$500.00**

Sixth grade students at Bellport Middle School will be treated to an interactive demonstration of the science of weather presented by The Franklin Institute. The presenters will make a cloud, explore thunder and lightning and even create a twister on stage. The grant will pay the fee for The Franklin Institute presenter and materials associated with the program titled "The Weather Show".

### **The Human Body**

Kimberly Morris, Christine Bellante  
Bellport Middle School

**\$500.00**

Seventh grade students at the middle school will take part in an interactive program presented by The Franklin Institute titled "The Human Body". Nutrients, digestion, muscles, skin, and blood flow will be topics to be explored. The grant pays the fee to The Franklin Institute.

### **The Energy Show**

Kimberly Morris, Sharyn Plotnick  
Bellport Middle School

**\$500.00**

Eighth grade students at Bellport Middle School will participate in an interactive program called "The Energy Show" presented by The Franklin Institute. The program will introduce students to the different kinds of energy and demonstrate how energy can be transformed from one type to another. Students will explore how energy powers everything from complicated electrical grids to the human body.

### **Forensic Science:**

#### **DNA Profiling**

Kimberly Morris  
Bellport Middle School

**\$1300.00**

Approximately 75 students enrolled in the Honors Regents Living Environment classes at the middle school will study forensic science at the Biotechnology Teaching Laboratory at Stony Brook University. Students will use the modern day technique of "gel electrophoresis" to complete a DNA fingerprint from a simulated crime scene.

### **Writers Open**

#### **the Realm of Dreams**

The Cultural and  
Literacy Committee  
Frank P Long Intermediate School

**\$1,550.00**

The Cultural and Literacy Committee at Frank P. Long will host three author visits aimed at sparking student enthusiasm for the written word. Darren Sardelli, Ray Bean and Alice McLerran are the featured authors. Interactive discussions and reading aloud sessions will be the focus of the program. The grant pays the authors' fees and purchases each author's books for the school library.

### **Fire Island Ranger for a Day**

Aimee Volk, Teri Tietjen  
Frank P Long Intermediate School

**\$1,829.00**

Students in Cluster A at Frank P. Long Intermediate School will have the chance to classify animals and plant life during an interactive, ranger-led program at Sailor's Haven/Sunken Forest on Fire Island. Students will explore the mile and a half of rare maritime holly forest as they analyze and observe animals' habitats and rare plant life.

### **Be a Scientist! States of Matter**

Tracy Behl, Jessica Prush  
Frank P Long Intermediate School

**\$515.00**

Fourth and fifth grade special education students at Frank P. Long Intermediate School will explore states of matter in a hands on laboratory program at the Long Island Science Center. Students will learn to differentiate between solids, liquids and gases as they make ice cream, create a crystal garden and delve into the world of polymers. The students will also tour the museum.

- Kid Power & the Planet Protector** A highly-interactive, 50-minute musical presentation focusing on the natural environment and the actions students can take to protect it. The show features puppets, characters, clever visuals, singing and dancing and serves as a celebration of a number of planet-friendly initiatives in recycling, composting and edible gardening organized by the Courtyard Committee. Two assemblies for all Brookhaven Elementary students are covered.  
Sonia Orfin  
Brookhaven Elementary School  
**\$1,400.00**
- The New, Innovative Technique to Instant Information** This grant is for the purchase of 32 CPS Infrared Multiple Choice Clickers to be used primarily by 5th grade students in Cluster A at Frank P. Long Intermediate School. The clickers allow students to answer questions posed on internet sites like BrainPOP or directly by the teacher. Using the clickers with a Smart Board available in the classroom is a formula that keeps classroom interactive work exciting and engaging. The equipment will be lent to other classrooms when not in use in Cluster A.  
Aimee Volk, Teri Tietjen  
Frank P. Long Intermediate School  
**\$1,954.00**
- Woodworkers Club** The Woodworkers Club attracts 135 fourth and fifth grade students who learn to construct bird feeders, bird-houses, foot stools, benches, book holders and bat houses. The students develop design skills and put math skills and concepts to practical use. The grant pays for equipment including saws, blades, glue, screening, hinges, etcetera.  
Peter Cisek  
Frank P. Long Intermediate School  
**\$1,480.00**
- Garden Club** The Garden Club at the Frank P. Long Intermediate School will use this grant to expand the vegetable and herb gardens in the building's courtyard. The club attracts nearly 50 fourth and fifth graders and has been on-going for many years. The grant will pay for flowers, assorted vegetable plants and cages, potting soil, fruit trees, bird houses and weed block, among other things.  
Peter Cisek  
Frank P. Long Intermediate School  
**\$1,500.00**
- The Clipper** The staff of "The Clipper", BHS's monthly newspaper, requested funds to both purchase a computer for the paper and to upgrade the paper's website. The concept is to offer an alternative to a paper newspaper while giving students the opportunity to create an online presence. The grant will provide a laptop, pay monthly web hosting and domain costs for it and purchase Adobe Creative Suite program and other technical supplies.  
Daniel Santana  
Bellport High School  
**\$1,250.00**
- Literacy-Rich Reading Workshops** The applicants are literary coaches for the district and will attend the 10th Annual Teacher's College August Reading Institute at Columbia University. The week-long courses are designed for educators, classroom teachers, school administrators and curriculum specialists who are committed to turning classrooms into rich literary environments.  
Kimberly Gosselin, Brookhaven Elementary,  
Victoria Williams, Kreamer St. Elementary  
**\$1,650.00**

## 2012 FALL CALENDAR OF EVENTS

**SATURDAY, JULY 14TH, 5-7:30—14th Annual Cocktail Party and Auction  
at the home of Chantal and Richard Berman, Academy Lane, Bellport, NY**

**MONDAY, JULY 30TH-FRIDAY, AUGUST 3RD—Fourth Annual Students 4 Art Summer Art Experience  
Open to Students in Grades 1-12, Bellport High School**

**MONDAY, AUGUST 20TH—Fall Grant Applications Available**

**FRIDAY, OCTOBER 5TH—Fall Grant Application Deadline**

**FRIDAY, NOVEMBER 2ND—Fall Grant Winners Announced**

**TUESDAY, NOVEMBER 18TH, 7:30PM—Becker/Gambles Music Fund Concert  
Walter Ebersole Auditorium, BHS, Featuring "The Junkman" Donald Knaack with BHS Musicians**

(For more information, see our website [www.scefonline.org](http://www.scefonline.org))



South Country Education Foundation, Inc.  
P.O. Box 512, Bellport, New York 11713-1502

WWW.SCEFONLINE.ORG

**SCEF Mission Statement:**

South Country Education Foundation, Inc. is a non-profit organization committed to improving educational opportunities for all students in the South Country School District. Its mission is to promote and enhance educational initiatives by providing supplemental financial support for projects and programs that are outside of the South Country School District budget.

HELP US INVEST IN THE FUTURE OF OUR CHILDREN

NON PROF ORG  
U.S. POSTAGE  
PAID  
PERMIT NO. 66  
BELLPORT, NY

# Focus on the Future

## WE CANNOT REACH OUR GOALS WITHOUT YOUR HELP

\$25 ☐ \$50 ☐ \$100 ☐ \$200 ☐ Other \$ \_\_\_\_\_

NAME \_\_\_\_\_

STREET \_\_\_\_\_

CITY \_\_\_\_\_ STATE \_\_\_\_\_ ZIP \_\_\_\_\_

PHONE \_\_\_\_\_ E-MAIL \_\_\_\_\_

Make your tax-deductible checks payable to:  
South Country Education Foundation, Inc.  
P.O. Box 512, Bellport, NY 11713-0512

or pay by credit card

☐ Visa ☐ Mastercard ☐ Discover ☐ Amex

# \_\_\_\_\_ Exp. \_\_\_\_\_

Signature \_\_\_\_\_

## South Country Education Foundation, Inc.

### BOARD OF DIRECTORS

Mary Mojallali, *President*  
Barbara DuPree Knowles, *Vice President*  
Louise Miller, *Vice President*  
Diane Zanazzi, *Corresponding Secretary*  
Steve Montick, *Recording Secretary*  
Frank Lento, *Treasurer*

Lilliam DiGiacomo	Geoffrey Marschall	Robin Young Roe
Donna Esp	Nicole May	Karl Rohrmeier
Nancy Marr		Dava Stravinsky

### COMMUNITY ADVISORY COUNCIL

Chantal Berman	Pamela Lerner	Wesley F. Springhorn, Jr.
Richard Berman	Michael Mullaney	Cheryl Steinhauer
Elena Brodie-Kusa	Joann Neal	Sheldon Stiefeld
Art Cooley	Greg Pilger	William Struyk
Kathie Dallin	Leigh Powell	Fran Tabone
Bill Griffith	John J. Roe, III	Ceci Tripp
Mary P. Haines	Karen Rowley	Terry Tuthill
Wil Jansen	Kathleen Scheibel	Gene Westhoff
Daryl Jordan	Ken Searles	Thomas Williams
Jackie Kendrick	Marilyn Silverman	Kerry Young

### SPRING 2012 NEWSLETTER

Dava Stravinsky and Robin Young Roe, *Editors*  
JoAnne Powell, *SCEF logo art*  
Barbara DuPree Knowles, *Design and Production*  
Searles Graphics, *Printer*